




**EZOPRINT**  
PRINTED TILES

ezoBord 



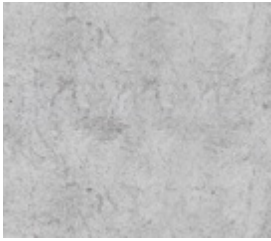
**ezoPrint adds depth and texture to any wall, improves acoustical comfort in any space, brings practicality and style to any architectural work. You can transform your environment with prints of favorite building materials, abstract designs or your own brand.**

Add visual interest to any wall, while providing acoustic absorption, tackability and modern style. With design options ranging from materials that imitate architectural choices to more abstract or branded options, you can transform your environment.

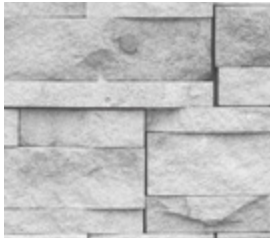
**Do you have your own ideas for printing?**

We want to collaborate with you on your project. Get in touch with us to see what you'd like get printed on ezoBord.

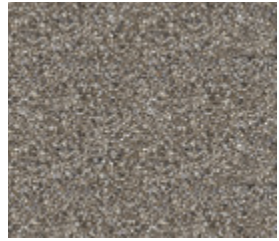
## STANDARD PRINTS - BRICK & STONE



Concrete



Large Brick



Gravel



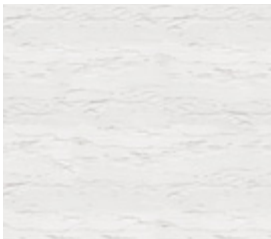
Ledger 1



Ledger 2



Slate Brick



Plaster



Small Slate Stone

PART NUMBER	WIDTH	LENGTH	THICKNESS
<b>21" x 21" Tile</b>			
ezo-pri-2121	21" (533mm)	21" (533mm)	3/8" (9mm)
<b>42" x 42" Tile</b>			
ezo-pri-4242	42" (1067mm)	42" (1067mm)	3/8" (9mm)
<b>42" x 90" Tile</b>			
ezo-pri-4290	42" (1067mm)	90" (2286mm)	3/8" (9mm)

Please note that all dimensions are nominal, supplier reserves the right to adjust sizing without prior notification

## STANDARD PRINTS - WOOD

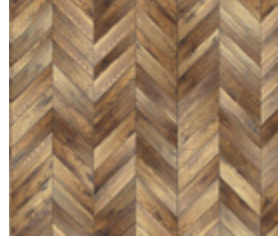
---



Gray Planks



Particle Board



Herringbone



Reclaimed White



Reclaimed Dark

PART NUMBER	WIDTH	LENGTH	THICKNESS
<b>21" x 21" Tile</b>			
ezo-pri-2121	21" (533mm)	21" (533mm)	3/8" (9mm)
<b>42" x 42" Tile</b>			
ezo-pri-4242	42" (1067mm)	42" (1067mm)	3/8" (9mm)
<b>42" x 90" Tile</b>			
ezo-pri-4290	42" (1067mm)	90" (2286mm)	3/8" (9mm)

Please note that all dimensions are nominal, supplier reserves the right to adjust sizing without prior notification



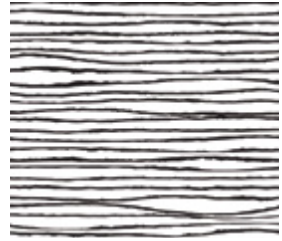
## STANDARD PRINTS - PATTERNS



Chevron



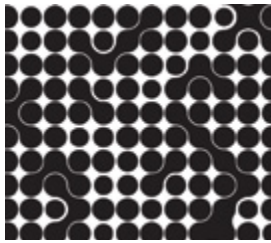
Vine



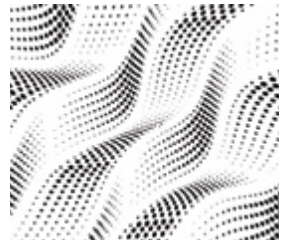
Furrow



Hour Glass



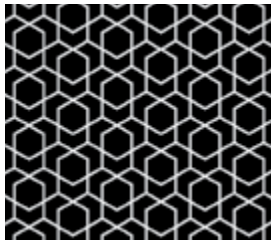
Dots



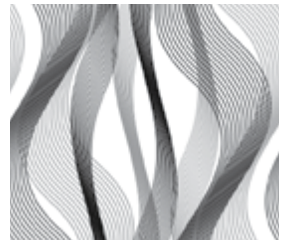
Halftone Waves



Diamond



Deco



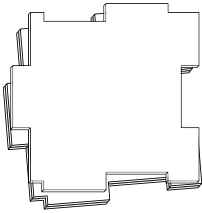
Wavy Lines

PART NUMBER	WIDTH	LENGTH	THICKNESS
<b>21" x 21" Tile</b>			
ezo-pri-2121	21" (533mm)	21" (533mm)	3/8" (9mm)
<b>42" x 42" Tile</b>			
ezo-pri-4242	42" (1067mm)	42" (1067mm)	3/8" (9mm)
<b>42" x 90" Tile</b>			
ezo-pri-4290	42" (1067mm)	90" (2286mm)	3/8" (9mm)

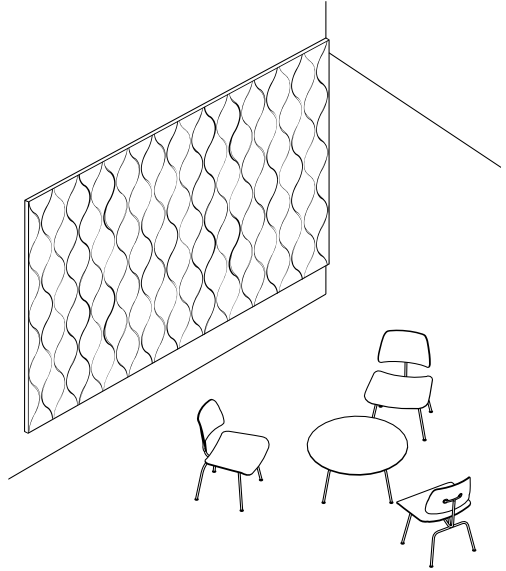
Please note that all dimensions are nominal, supplier reserves the right to adjust sizing without prior notification

## COMPONENTS

---

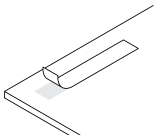


Tile(s)



## RECOMMENDED HARDWARE (NOT INCLUDED)

---



ezoTape  
DST-010, DST-015, DST-020



Contractor grade adhesive  
(not sold by most ezoBord distributors)



## CUSTOMIZABLE PARAMETERS

Do you want to make your brand more prominent in your professional environment while improving acoustics? Do you want to bring in some artwork that also absorbs sound? Or do you want to take one of our patterns and change the colors up? We also do custom prints – photographs, illustrations, artwork or logos and brand imagery.

### Geometric Properties

Tile dimensions

### Material Thickness

$\frac{3}{8}$ " (9mm) or  $\frac{1}{2}$ " (12mm)

### Applicable File Formats

Illustrator , Photoshop. InDesign CC or below (.ai, .eps, .psd, .psb, .tif, .eps, high res .jpg, .indd and .idml)



Designed by Ray Inc.  
Photographed by Vincent Lions Photography.

## SPECIFICATIONS

### Shape Tiles Sizes

Available in three tile sizes:

- 21" (533mm) × 21" (533mm)
- 42" (1067mm) × 42" (1067mm)
- 42" (1067mm) × 90" (2286mm)

### Thickness

Available in two thicknesses:

- 3/8" (9mm) | ±0.5mm
- 1/2" (12mm) | ±0.5mm

### Composition

100% PET (min. %50 recycled content)

### Product Variances

Variation in fiber mix and colour may occur. All products will be supplied within commercial tolerances.

### Cleaning

Remove dust and dirt with a stiff plastic bristle brush. Distilled water can be used to remove stains. Always use a soft, clean cloth and blot dry. Vacuuming works great as well.

### Fire Testing

- North America:
  - ASTM E-84 Class A\*
  - CAN ULC S102-10
- Europe and UK:
  - EN13501-1: 2007

### Installation

ezoPrint Tiles can be applied to any wall surface with double sided ezoTape or with any standard clear drying contractor grade adhesive.

### Acoustics

Refer to ASTM C423 test chart for specific absorption rates/frequency.

- 3/8" (9mm): NRC 0.75 (subject to

mounting conditions and geometrical properties)

- 1/2" (12mm): NRC 0.85 (subject to mounting conditions and geometrical properties)

### Print Information

- Water or latex based printing
- Little to no film thickness with 1-3 picolitre droplets
- Color Space: CMYK
- 600-1.200 dpi print resolution
- Compliance: REACH, PVC Free, Nickel Free, FSC, UL Green Gold, Eco Mark Certification Number 141420017, UL ECOLOGO, AgBB Criteria, ASTM F793 Type II

### USGBC LEED v4 Credits

While individual products do not 'earn' LEED credits, ezoBord can contribute to the following LEED v4 Credits. Please refer to the USGBC LEED credit guides for detailed requirements.

- EQc9 for enhancing acoustic performance
- MRc3 BPDO for sourcing of raw materials for recycled contribution
- EQc6 interior lighting for surface reflectance (lighter color options).

### Environment

Made of polyester fiber, min. 50% of which comes from recycled water bottles which contributes to LEED MR Credit and BREEAM Health and Wellbeing, Materials points due to recycled content, acoustic performance, and low emitting materials. No VOC's: CDPH v1.2 and REACH SVHC Compliant.



\* Upon request, 1/2"(12mm) sheet material is treated with USA origin post-production flame retardant to Class A surface burning characteristics. Post sheet production FR treatment does not contain any Red List Restricted Chemicals and complies with California Proposition 65. Contact customer service for technical information, test data and safety data sheets for flame retardant.

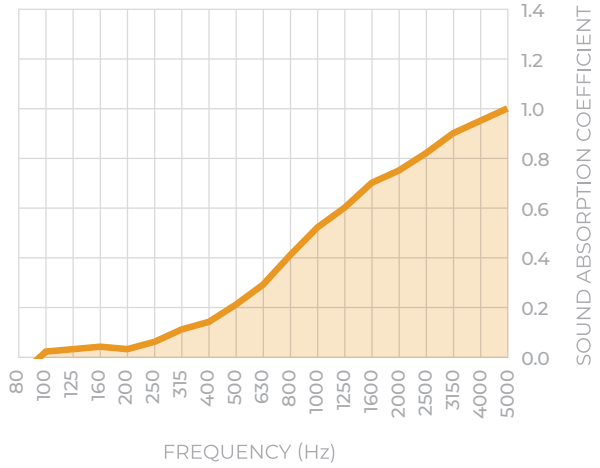


## NOISE REDUCTION - ½" (12mm)

Constructed from  
½" (9mm) ezoBord

### SOUND ABSORPTION COEFFICIENTS (ASTM C423-17)


NRC	SAA	125	250	500	1000	2000	4000
0.40	0.39	0.03	0.07	0.21	0.51	0.76	0.95






## CONNECT WITH US

[www.ezoBord.com](http://www.ezoBord.com)

 [@ezobord](https://www.instagram.com/ezobord)

 [@ezobord](https://twitter.com/ezobord)

 [linkedin.com/company/ezobord](https://www.linkedin.com/company/ezobord)

ezoBord is a registered trademark of iVekter Inc.

## USA

Ayrsonics Midwest LLC  
170 Prairie Lake Rd  
East Dundee, IL 60118  
1-800-517-0686  
[sales@mw.ayrsonics.com](mailto:sales@mw.ayrsonics.com)

## CANADA

Ayrsonics Inc.  
825 Trillium Drive  
Kitchener ON N2R 1J9  
1-844-441-1122  
[sales@ayrsonics.com](mailto:sales@ayrsonics.com)

## UNITED KINGDOM

ezoBord UK LTD  
Unit 20  
Westwood Business Park  
Margate, Kent, CT9 4JJ  
+44 7981 111236  
[sales@ezobord.co.uk](mailto:sales@ezobord.co.uk)