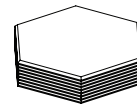
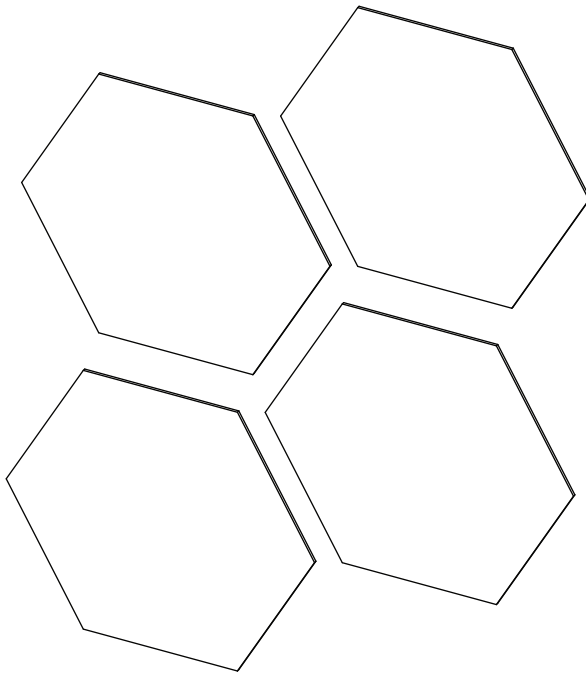


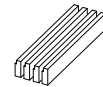


Design Driven Acoustics

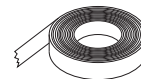
EZO STAND OFF



GEO TILES



EZO STAND OFFS



EZO TAPE

*Images reflect typical hardware options. Please refer to packing list for items & quantities specific to your order.

Thank you for your order!

For questions or concerns regarding your order or installation please contact your local customer service.

Canada: 1-844-441-1122 or sales@ayrsonics.com

USA: 1-844-441-1122 or info@usa.ayrsonics.com

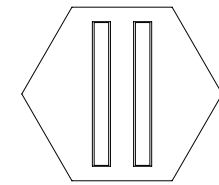
www.ezobord.com

EZO STAND OFF WALL APPLICATION

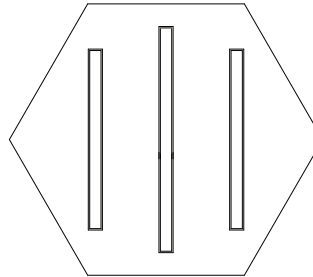
1 Remove paper backing from one side of ezo stand offs and apply to ezo product

*Ensure most stand offs are applied to install vertically every 12-16"

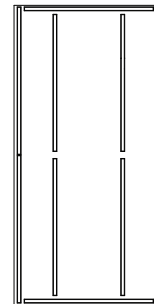
2 Use roller to burnish stand off against ezo product to ensure adhesion of tape and ezo



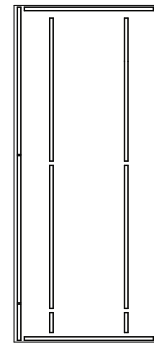
6"-12" Geotiles
require 2 stand offs



12"+ Geotiles
require 3+ stand offs



4'X8' SHEETS

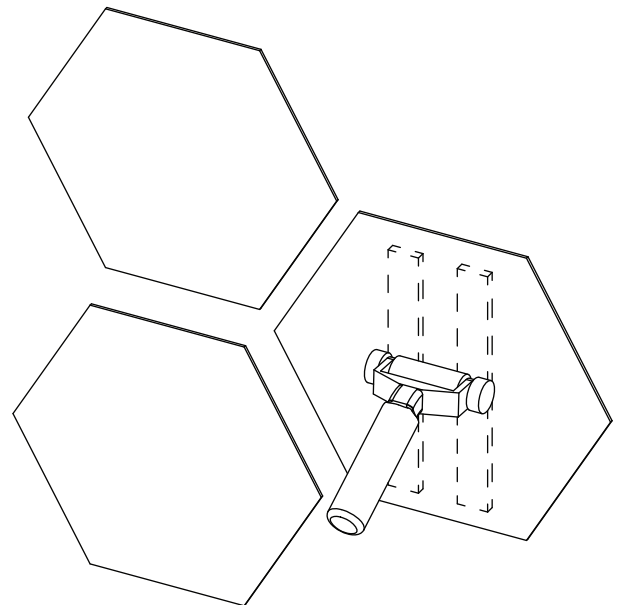


4'X9' SHEETS

3 Locate placement on wall, level and mark with pencil

4 Remove paper backing from tape and apply to wall

5 Burnish ezo with roller taking care only to apply pressure only where ezo stand offs are located



Recommended Tools

Level
Tape Measure
Utility Knife
Roller

ezoBordTM

Design Driven Acoustics